



525 Almanor Avenue, Suite 200
Sunnyvale, CA 94085

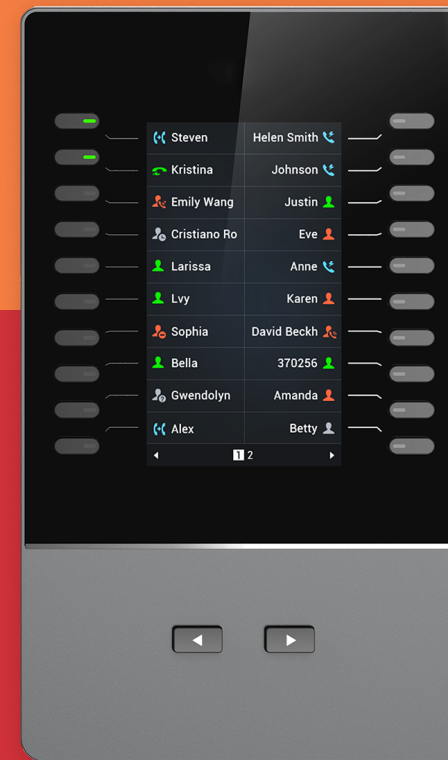
Learn more at www.ooma.com

or call **1-866-939-6662** (US) or **1-877-948-6662** (Canada)

© 2021 Ooma, Inc. All rights reserved. Patent Pending. Ooma, Ooma Telo, Ooma Connect 4G Adapter, Ooma Premier, Ooma HD3 Handset, Ooma Linx, Ooma Home Security, and the Ooma logo are trademarks or service marks of Ooma, Inc. Other company and product names mentioned herein are trademarks of their respective companies. Mention of third-party products is for informational purposes only and constitutes neither an endorsement nor a recommendation. Ooma assumes no responsibility with regard to the performance or use of these products. P/N: 700-0304-100

Ooma® GBX20

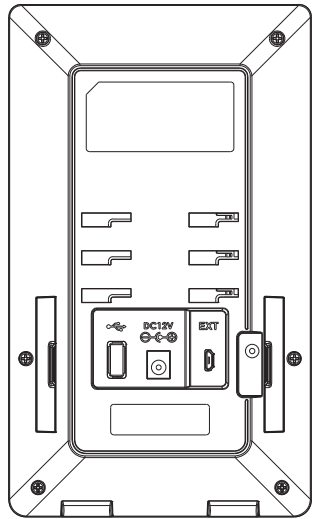
Quick Start Guide



Getting Started

Follow the instructions below to connect the Ooma GBX20 Expansion Module to your Ooma 2624 or Ooma 2615 IP phone.

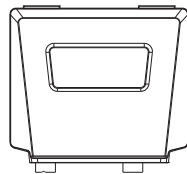
Package Contents



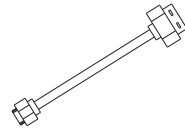
Ooma GBX20



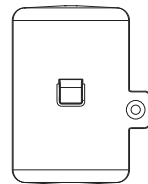
Power Adapter



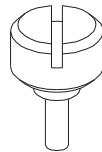
Stand



USB Connector Cable



Connector plate

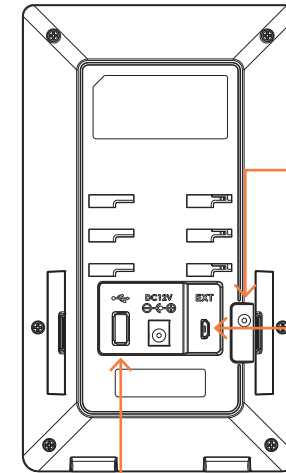


Screw

STEP 1

Install Connector Plate

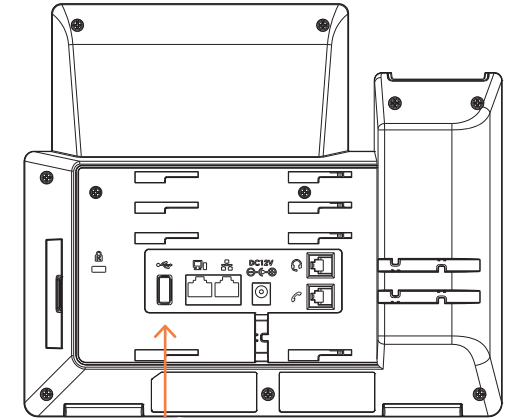
Remove the rubber cover on the back of the Expansion Module. You will see the slots for the connector plate. Insert one side of the connector plate into the IP phone and the other end into the Expansion Module. Secure the plate with the screw provided.



Remove the rubber covers on the back of the GBX20. You will see the slots for the connector plate.

EXT Port to link the GRP2615/GXV3350

EXT Port to link another GBX20

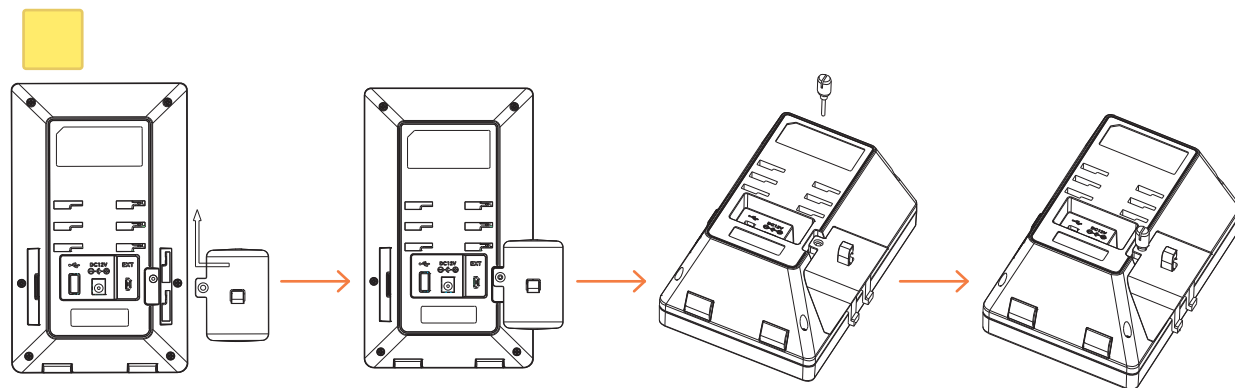


EXT Port to link the GBX20

STEP 2

Install Connector Cable

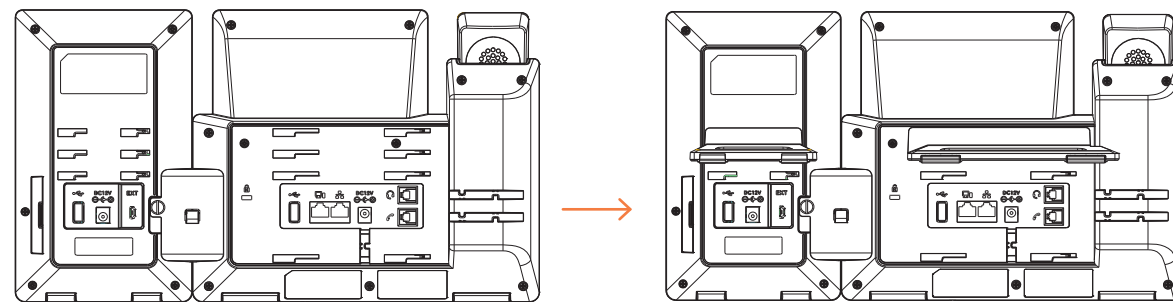
Connect the micro USB end of the connector cable to the EXT port on the Expansion Module. Connect the other end of the cable to the USB port on the IP phone.

**STEP 3**

Install the Stand

Align the stand with the slots on the back of the Expansion Module. Slide right until you hear a click.

NOTE: Connect the power supply to the GBX20 when daisy chaining multiple GBX20's on a single phone.



NEED HELP? If the phone still has no service, please contact Ooma Office Support at **866-939-6662** (US) or **877-948-6662** (Canada).

Notes:

Have a question or need assistance?

Ooma has a wealth of available resources if you need assistance.

Support articles. Access our comprehensive knowledge base at <https://support.ooma.com/office>

User manuals. Access this guide and all other product manuals at <https://support.ooma.com/office/manuals/>

Speak with a support specialist 24/7 at **1-866-939-6662** (US) or **1-877-948-6662** (Canada).